

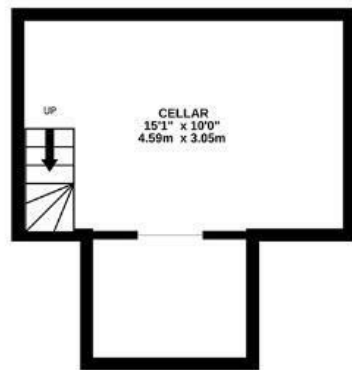
# Bath Buildings

## MONTPELIER

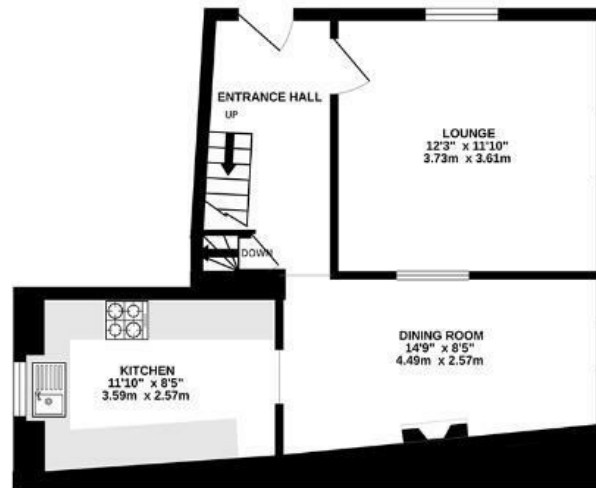
APPROXIMATE FLOOR AREA  
94.8 SQM / 1020 SQFT



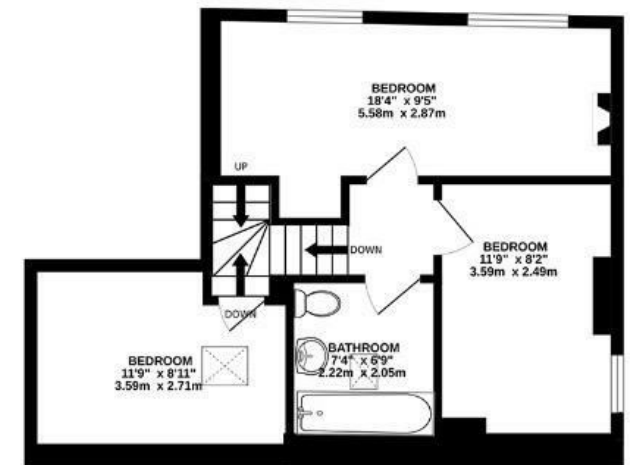
CELLAR



GROUND FLOOR



FIRST FLOOR



Boardwalk

# Bath Buildings

, BRISTOL



£375,000



3 Bedrooms



BS6 5PT



1 Bathrooms

*"I love the quirkiness and space of this home, it's been my sanctuary through so many phases of life. A great house for parties and hosting as a shared space with friends and now a great family home. Everything I need is a five minute walk away, I'll truly miss living here in the heart of such a wonderful community."*

